

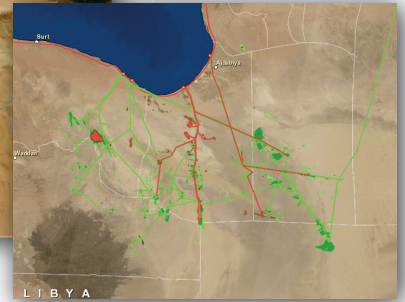
NUBIAN CONSULTING NC

Oil & Gas Atlas of Libya on ArcGIS Online

This Online Atlas of Libya is established as an important tool for operating in Libya and is highly valued by a number of key players in the Libyan oil patch. IOCs operating in Libya find the atlas easy to use on a day to day basis and value the extensive functionality.

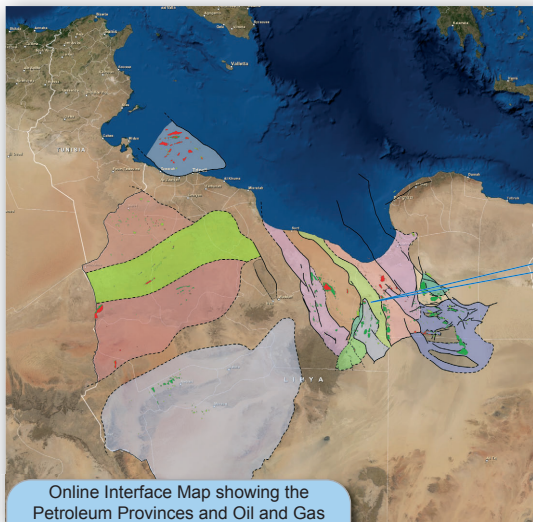


Interface Map with satellite imagery, petroleum provinces, surface geology and pipelines

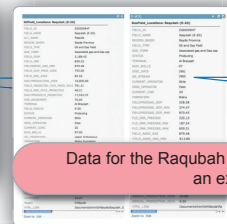
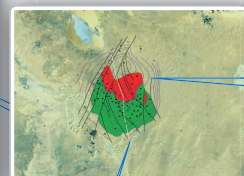
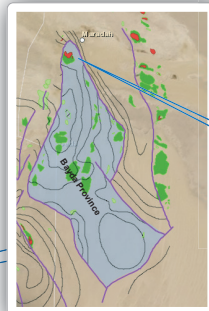


- Contains descriptions of all developed and undeveloped oil and gas fields in Libya onshore and offshore; also recorded are all discovery wells
- Contains information on geology, structure, field history and reserves
- Top reservoir structure maps are given for the majority of fields with originally recoverable reserves of more than 10 million barrels of oil or 60 bcf of gas
- More than 140 field cross-sections are included
- Reservoir parameters and transparent reserves calculation data are given for each field
- The maps, cross-sections and reserves calculations distinguish this atlas from other field databases

ESRI's 'Cloud' based ArcGIS Online platform is used to deliver this Atlas. An alternative platform is available to EGI Corporate Associates who may use the EGI iCORDs global database to gain access to the Atlas.

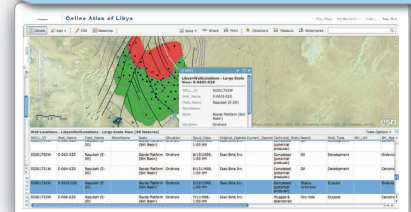
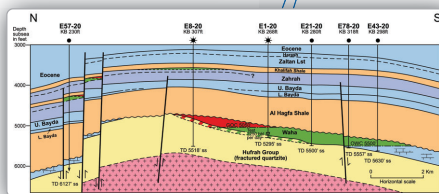


Online Interface Map showing the Petroleum Provinces and Oil and Gas Fields of Libya



Data for the Raqubah Field is shown here as an example

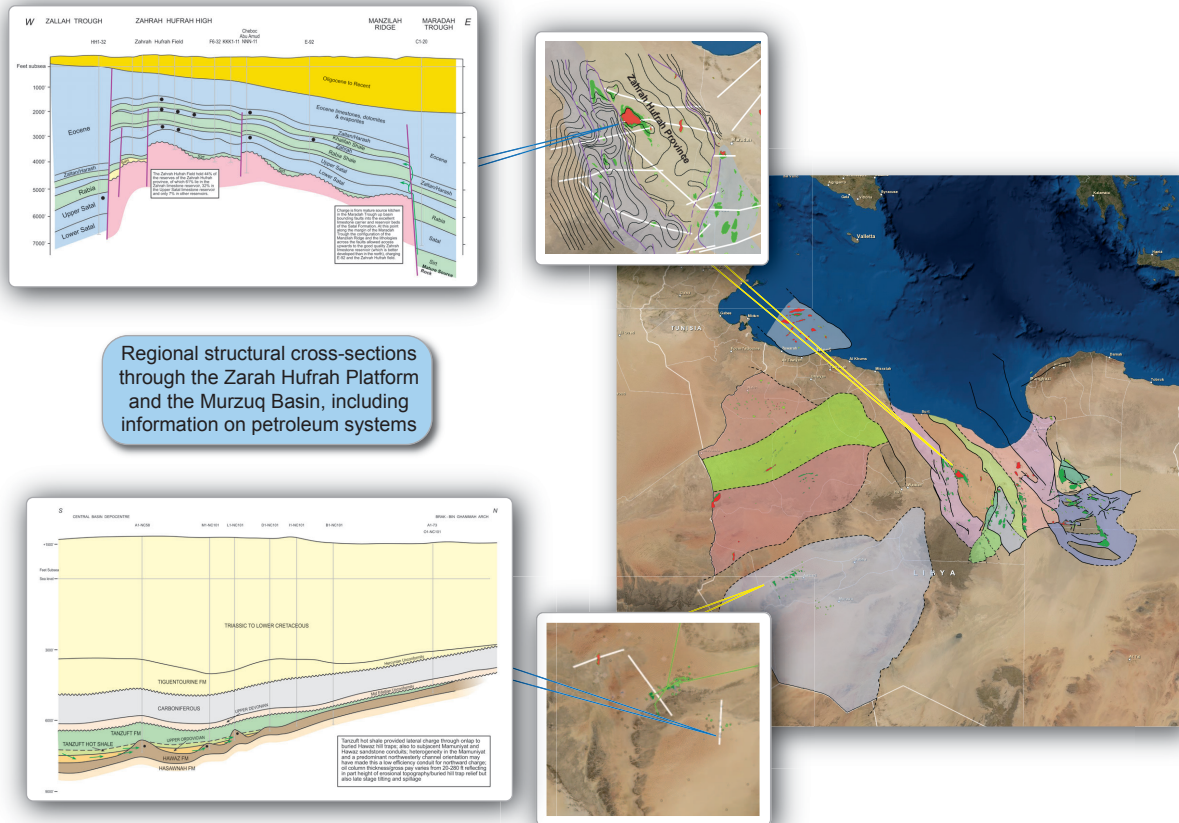
Filter functions allow user to query and display data for specific attributes, e.g. wells in the Raqubah Field



With a few clicks, even on a smartphone or tablet, users can:-

- Zoom and navigate over the entire map of Libya viewing
 - location and status of exploration and development wells
 - oil and gas fields
 - all set against a background of petroleum province, surface geology or satellite imagery
- Search for data on specific fields and wells
- See fields in the context of regional cross sections, key depth maps, petroleum provinces and stratigraphic columns
- Review top reservoir depth map and cross section field by field
- Identify trapping mechanisms
- Discover oil and gas reserves estimates and
- Petroleum geology literature on each field
- See the specific data (porosity, Sw etc) behind the reserves estimates
- See location of oil terminals and oil and gas pipelines
- Place all the above data in context of current licences and licensees, updated annually

Nubian Consulting is recognised as the leading consultancy on Libyan Petroleum Geology. The descriptions contained in this atlas, the structure maps, cross-sections and reserves estimates, are more comprehensive and authoritative than any others previously available. The atlas is kept up to date with reserves estimates being reviewed and updated annually incorporating recent production data.



The **Prime package** includes all mapping, reserves and reserves calculations data (remaining reserves updated annually); also field cross-sections and stratigraphic columns.

The **Master package** is a more comprehensive package which includes all data in the Prime package plus past and current detailed geographical and corporate information on licensing. Also additional cross-sections, stratigraphic charts and play fairway maps. This package has an exciting new feature, a general and technical newsfeed keeping the user completely up to date on a daily basis about developments in the oil industry primarily in Libya (but also covering Tunisia, Algeria and Morocco). For Libya we aim to show the location of gps-specific news items; for instance, new discovery wells, reported test results, acreage opportunities and licence specific news etc.

The **Elite package** allows licensees to become affiliates of Nubian Consulting benefitting not only from all the data in the Master package but also sharing selective access to hard data packages on Libya in Nubian Consulting's archives.

Nubian Consulting Limited
The Old Coach House, Oak Court
Silver Street, Wiveliscombe, Somerset, TA4 2PA U.K.
Contact: Danny Clark-Lowes or Johannes Sobotzki

d.clarklowes@nubianconsulting.co.uk
johannes.sobotzki@nubianconsulting.co.uk
Telephone / fax: 44 (0) 1984 624520
www.nubianconsulting.co.uk

